

100%
FRADEANI



Dr. Mauro
FRADEANI

3-series Master program
in fixed prosthodontics

2026

Approach to modern
prosthetic rehabilitation



the course

Approach to modern prosthetic rehabilitation

5-7 OCTOBER | 9-11 NOVEMBER | 14-17 DECEMBER

The application of a well-established protocol, tested over approximately 35 years, represents—especially in the case of extensive rehabilitations—an essential means of achieving an optimal final result from aesthetic, biological, and functional perspectives. The goal of the prosthetic treatment plan is to ensure ideal integration of aesthetic, biological, and functional requirements on both natural teeth and implants.

Aesthetic analysis, based on a simple and systematic approach to facial, dento-labial, phonetic, dental, and gingival evaluation, is a key step in optimizing the prosthetic treatment plan. From this perspective, once the aesthetic chart has been completed, the laboratory prescription form is introduced—an essential tool for clear and effective communication with the dental technician. Its careful completion allows the clinician to precisely specify all requests and modifications, enabling the creation of an ideal diagnostic wax-up. By incorporating all necessary adjustments to optimize the rehabilitative outcome, it can subsequently be translated into a provisional restoration that must fit in the mouth in the exact position in which it was constructed on the articulator.

The provisional restoration must serve as a prototype to be faithfully replicated in the final prosthesis, preserving all information regarding shape, position, emergence profile, and tooth arrangement, thus ensuring compliance with all aesthetic and functional parameters clinically tested—especially in particularly challenging clinical cases.

The selection of restorative materials in collaboration with the technician represents a crucial aspect of rehabilitation, particularly in complex cases involving crowns, veneers, bridges, and implant abutments made of ceramic. The use of all-ceramic materials allows for excellent aesthetic outcomes, especially in the anterior region restored with crowns and veneers. Today, certain prosthetic strategies make it possible to adopt minimally invasive techniques (MIPP), ensuring highly aesthetic and long-lasting results, even in severely compromised clinical situations, while also improving patient acceptance of treatment.

registration
fee*

single registration

€ 6,500.00

combined registration

€ 5,900.00

+vat 22%

The fee includes two coffee breaks per day, lunch, and one end-of-course dinner.

TUTOR

During the hands-on sessions, participants will be supported by the speaker and a Master Tutor.

TEACHING MATERIALS, BIBLIOGRAPHY

Each participant will be provided with educational materials and international literature.

CERTIFICATE OF ATTENDANCE

At the end of the course, participants will receive an official certificate of attendance.



the facility

Dental Trey Fiumana (FC)

Dental Trey Fiumana – Via B. Partisani 3
Tel. +39 0543 929111

We recommend visiting the website www.dental Trey.it
for travel and accommodation information, or contacting the venue directly by phone.



registration and payment

■ Payment modalities

BANK TRANSFER

to:

Intercontact Srl

IBAN: IT88R0306913304100000063595

Banca Intesa Sanpaolo

■ Info

ON OUR WEBSITE

www.fradeanieducation.com

or direct link

bit.ly/international_fradeani

Organizing secretariat

INTERCONTACT SRL

Tel. 072126773

Email l.balducci@intercontact.it



the speaker

Dr. Mauro Fradeani

Former President of the Italian Academy of Prosthetic Dentistry (AIOP) and of the European Academy of Esthetic Dentistry (EAED), he served as Visiting Associate Professor in Prosthodontics at Louisiana State University – New Orleans from 1999 to 2008. He is an Active Member of the American Academy of Esthetic Dentistry and a Life Member of the American Academy of Fixed Prosthodontics. In 2021, he was awarded the Schweitzer Research Award by the Greater New York Academy of Prosthodontics.

He is actively involved in teaching both in Italy and internationally and is the Founder and Director of Ace Institute, a training center for dentists based in Pesaro. He is also the Founder and Director of Fradeani Education, an educational project that brings together a team of speakers engaged in promoting an Italian model of excellence in dentistry worldwide.

He is the author of numerous scientific publications in international journals and of the two-volume book “Esthetic Rehabilitation in Fixed Prosthodontics” (Quintessence Publishing), translated into 12 languages.

He maintains a private practice in Pesaro, limited to esthetic prosthodontics on natural teeth and implants.



THE “S” SOUNDS

MANDIBULAR MOVEMENT AND TOOTH POSITION

3-series Master program in fixed prosthodontics
The esthetic and functional rehabilitation

MODULE 1	5 - 7 October 2026	6
Esthetic and functional evaluation in prosthetic rehabilitation treatment planning		
MODULE 2	9 - 11 November 2026	8
Esthetic, functional and biological integration in prosthetic rehabilitation on natural teeth and implant		
MODULO 3	14 - 17 December 2026	10
Selection of ceramic materials from single-tooth restorations to full-mouth-rehabilitation		

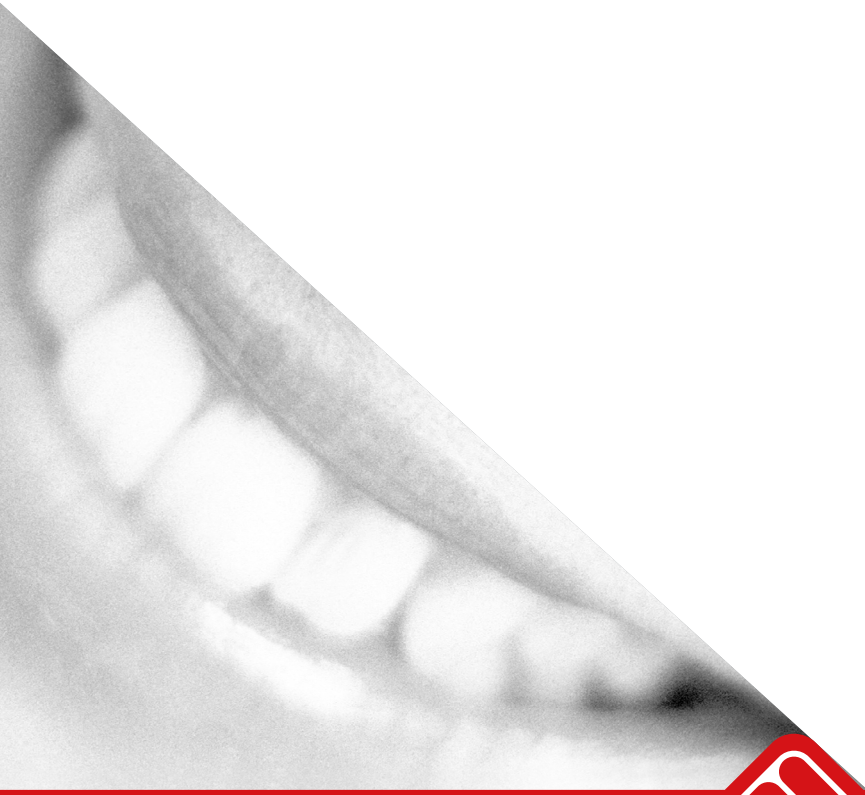


Esthetic and functional evaluation in prosthetic rehabilitation treatment planning

Diagnosis and treatment planning are the two fundamental aspects for the success of any prosthetic rehabilitation, whether simple or complex. By following a well-established systematic approach, the clinician is able to collect accurate esthetic data and perform an appropriate assessment of risk factors, thereby avoiding errors and complications that could lead to prosthetic failure.

Effective and comprehensive communication with the dental technician is also essential for transmitting all the information required to create a diagnostic wax-up. Nowadays, the use of digital techniques and tools allows for simplification and greater predictability in the analysis and processing of esthetic and functional data; these technologies also make communication with both the patient and the dental laboratory more precise and immediate.

In this first module, the speakers will outline the steps to be followed for the esthetic and functional analysis of the patient, illustrating the key principles for processing the data necessary to develop an ideal prosthetic treatment plan. Particular emphasis will be placed on function, an aspect that is too often overlooked but is essential to ensure the longevity of prosthetic restorations.



ESTHETIC ANALYSIS

Facial analysis

- › Frontal view: interpupillary line, commissural line, midline related to the horizon
- › Lateral view: profile, nasolabial angle, e-line

Dentolabial analysis

- › Tooth exposure at rest, incisal edge, smile line, smile width, labial corridor, interincisal vs facial midline, occlusal plane vs horizon

Phonetic analysis

- › Pronunciation of M-F-S-E sounds
- › Incisal edge position, tooth length, vertical dimension

Dental analysis

- › Keyfactors of treatment planning and the restoration of anterior teeth: how to detect and how to overcome possible obstacles for an ideal esthetic result
- › Dental shape, proportion, position, arrangement and colour
- › Transitional line angles: how to give the illusion of dental length and width modification

Gingival analysis

- › Gingival margin outline
- › Parallelism and symmetry
- › Gingival zenith
- › Interdental papillae

Esthetic checklist

- › Indispensable tool for the clinician
- › Simple, predictable and efficient method
- › Interdental papillae

FUNCTIONAL ANALYSIS

- › Occlusal planes
- › Occlusal relationships (MI - CO - CR)
- › Vertical dimension
- › Customized anterior guidance
- › Parafunctional activities
- › Temporomandibular Joint Disorders (TMJ)
- › Anatomy and physiology of TMJ, clinical examination, masticatory muscles disorders and articular disorders, diagnosis and treatment, the bites: indications and clinical management
- › Occlusal trauma
- › Occlusal adjustments

DATA TRANSFER

- › Facebow taking
- › Occlusal records
- › Mounting in the articulator
- › Adjusting the articulator
- › Dental photography
- › The use of digital systems for an ideal treatment planning: GETApp Fradeani, a tool aiming at guiding the clinician throughout the esthetic and functional rehabilitation with a step-by-step approach in every phase of the prosthetic treatment

DIAGNOSTIC WAX-UP

- › Occlusal adjustments of stone casts
- › Additive diagnostic wax-up
- › Technical and clinical suggestions
- › Wax-up as prototype for provisional

MOCK-UP

An indispensable procedure for the preview and the optimization of the prosthetic design

- › How to perform an ideal mock-up
- › Mock-up in simple and complex cases
- › Confirmation and correction of the mock-up

PRACTICAL DEMONSTRATION BY THE SPEAKER

The speaker will perform different procedures of centric and protrusive wax records, as well as the facebow records, to correctly mount the models in the articulator

HANDS-ON TRAINING BY THE COURSE PARTICIPANTS

- The participants' practice will focus on:
- › Occlusal records procedures, aided by the speaker
 - › Esthetic optimization of an anterior area model according to the principles of the ideal dental composition



THEORETICAL SESSION



PRACTICAL SESSION



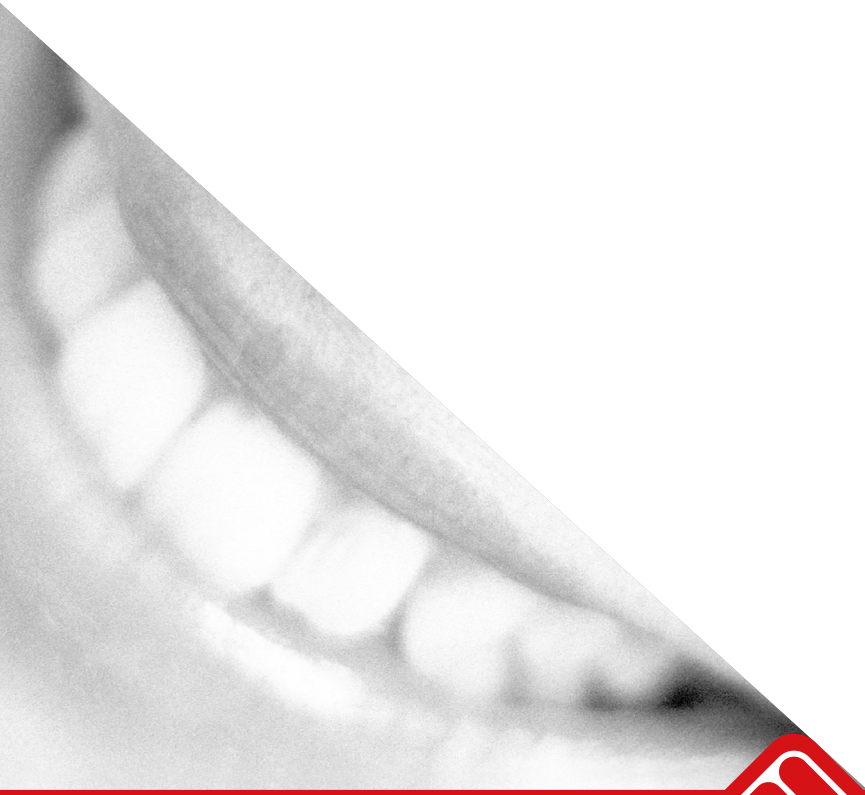
LIVE DEMONSTRATION

Esthetic, functional and biological integration in prosthetic rehabilitation on natural teeth and implants

The esthetic, functional, and biological integration of prosthetic rehabilitation depends not only on proper treatment planning, but also on the accurate execution of a number of essential clinical steps. By following key procedures, it is possible to fabricate a provisional restoration that closely reflects the treatment plan developed in the articulator, achieving the treatment objectives from the outset, saving valuable time, and reducing unnecessary stress for the clinician.

The execution of tooth preparations that adhere to fundamental principles—such as minimal invasiveness— together with precise impression-taking and the application of a systematic approach for transferring the provisional restoration, enable the clinician to achieve excellent final outcomes in prosthetic treatment. Moreover, the use of recently developed digital tools and techniques offers numerous advantages, including simplified workflows and increased predictability throughout all clinical phases of prosthetic rehabilitation. In particular, the speakers will present the most up-to-date digital impression techniques, a constantly evolving technology that has represented a true revolution in modern dentistry.

During the second module, the speakers will illustrate all these clinical steps based on their extensive experience, providing practical tips aimed at achieving a high success rate.



CREATING AND INTEGRATING THE PROVISIONAL RESTORATION

Provisional fabrication and integration

- › Requisites and materials
- › Modified indirect technique (MIT)
- › How to idealize the insertion of the shell before relining
- › Direct technique
- › Indirect technique
- › Fitting, insertion
- › Reinforced provisional
- › Relining, re-margining and finishing
- › Coloring, glazing and cementation

Provisional fabrication and integration

- › Facilitated insertion guide of the acrylic shell before provisional relining

Anterior rehabilitation

- › PSM fabrication technique
- › Positioning in the oral cavity

The provisional as prototype for the final restoration

TOOTH PREPARATION

- › Abutment selection
- › Bio-mechanic principles of tooth preparation
- › Necessary instruments and burs selection
- › Instruments selection and use
- › Indications according to the clinical case
- › Esthetic tooth preparation in the anterior area
- › Step-by-step procedures of different tooth preparation techniques
- › Light chamfer, deep chamfer, 50-degree shoulder, 135-degree shoulder, bevel, knife edge
- › Differentiated tooth preparation
- › Supragingival, juxtagingival, intrasulcular and subgingival margins
- › Minimally invasive tooth preparation (MIPP): new trends

IMPRESSION MATERIALS AND TECHNIQUES

- › Impression techniques on teeth and on pontic areas
- › Treatment of edentulous areas
- › Gingival displacement
- › Use of retraction cords or alternative techniques
- › Management of soft tissues for intrasulcular preparations
- › Step-by-step fabrication of a customized tray
- › Selection of the impression materials: alginates, polysulphides, Polyvinyl, Siloxanes, Polyethers
- › Taking the impression with digital scanners - traditional vs digital techniques

DIGITAL IMPRESSIONS

- › Basic principles of intraoral scanners
- › How to perform the digital cross-mounting with intraoral scanners
- › The importance of the scanning strategy on natural teeth and scan body
- › The digital scanning protocol as a guarantee for high trueness and consistency
- › Scan body, implant libraries and alignment: concepts for the daily practice

ESTHETIC AND BIOLOGICAL INTEGRATION ON NATURAL DENTITION

- › Pre-prosthetic periodontal surgery for the esthetic optimization in the anterior sector
- › Minimally invasive surgical procedures: gingivectomy, attachment removal, buccal resective surgery

ESTHETIC AND BIOLOGICAL INTEGRATION ON IMPLANTS

- › Surgical and prosthetic protocols for the stability of the peri-implant tissues
- › Implant-prosthetic rehabilitation of a single tooth in the anterior area
- › Extended implant-prosthetic rehabilitation: 1 arch - 2 arches

FROM THE PROVISIONAL RESTORATION TO THE DEFINITIVE PROSTHESIS: DATA TRANSFER

- › Verifying the integration of the provisional
- › The protocol to copy the esthetic and functional parameters of the provisional
- › Cross-mounting

HANDS-ON TRAINING BY THE COURSE PARTICIPANTS

The participants' practice will focus on tooth preparation for anterior and posterior crowns on dental models

 THEORETICAL SESSION

 PRACTICAL SESSION

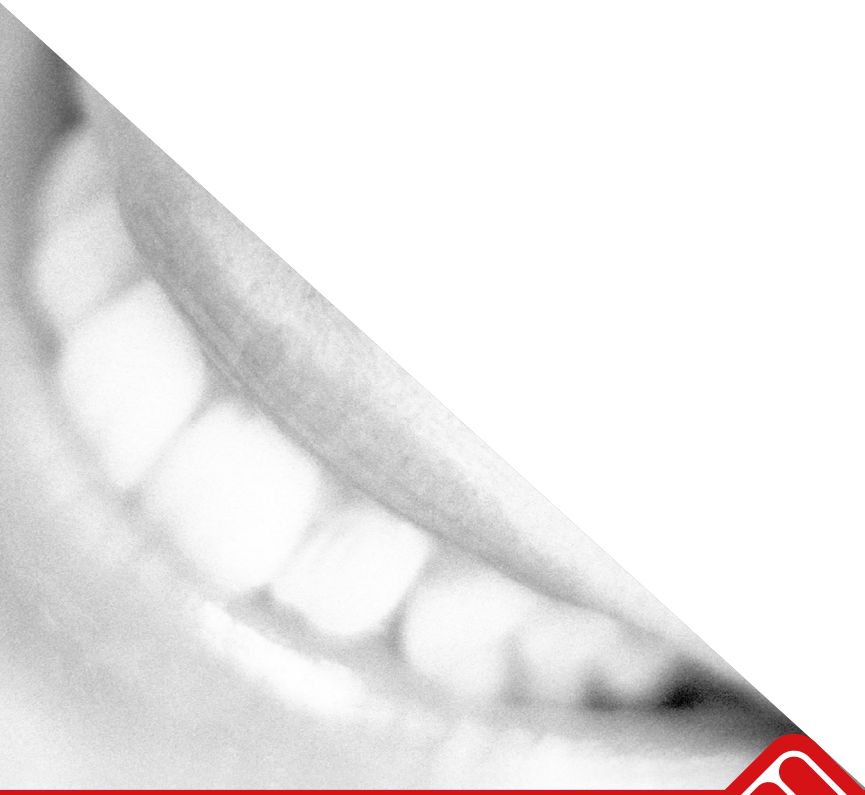
 LIVE DEMONSTRATION

Selection of ceramic materials from single-tooth restorations to full-mouth rehabilitation

The final phase of prosthetic rehabilitation involves the fabrication and cementation of prosthetic restorations. The selection of the restorative material is crucial and should be made during the early stages of treatment planning, as it is closely related to the patient's initial clinical condition and the type of preparation performed.

This choice can be complex for the prosthodontist due to the wide range of restorative materials currently available on the market. Therefore, significant attention will be devoted in the third module to the description of the main materials, along with precise guidelines on how to identify the most suitable options based on clinical testing and extensive experience. In addition, all modern principles of adhesion and the clinical steps for the cementation of restorations will be thoroughly illustrated.

Through the presentation of clinical cases, participants will also learn how to apply minimally invasive prosthetic rehabilitation techniques (MIPP), in order to manage complex cases in a predictable manner while respecting the principles of esthetic and functional integration and minimal invasiveness.



ALL-CERAMICS

- > Feldspathic porcelain
- > Glass ceramics
- > Alumina ceramics
- > Colour evaluation of the abutment and appropriate selection of ceramic ingots
- > Contemporaneous finalization of crown and veneer in the anterior sector on the same patient
- > The development of all-ceramics during the last decade
- > High-strength ceramics
- > Indications, possibilities and limits
- > Clinical parameters for long-term success
- > Glass-ceramics: Empress, e.max
- > Alumina ceramics: In-Ceram, Procera
- > Zirconia-based ceramics: Cercon, Lava, Procera
- > 5 rules to avoid fractures
- > Cementation techniques: conventional cements, adhesive cements
- > 25-year clinical follow-up with different ceramic materials

MIPP 1 e 2 - MINIMALLY INVASIVE PROSTHETIC PROCEDURE

- > New trends in restorative dentistry
- > Procedure, principles and advantages

CERAMIC VENEERS

- > The use of veneers to optimize esthetics and function
- > Direct mock-up, indirect mock-up: diagnostic use
- > Tooth preparation:
 - design variability in accordance with the clinical case
 - incisal shoulder, overlapped
 - maintenance of enamel or deepening in dentin
 - supragingival and intrasulcular tooth preparation
 - step-by-step procedure

Provisional restorations

- > Fabrication techniques, relining, refining and polishing
- > How to maintain the provisional restorations in site until final bonding
- > Spot etching technique
- > Use of "natural Die material" posts
- > Step-by-step preparation
- > Step-by-step cementation

ADHESIVE CEMENTATION

- > Try-in on patient with different translucency and coloured cements
- > Tooth surface and ceramic conditioning
- > Correct use of dentine adhesive
- > Bonding, refining and polishing

CERAMIC BRIDGES

- > Ceramic bridges: new developments
 - Zirconia, alumina and glass-ceramic bridges: reality or illusion?
 - Possibilities and limits

PARTIAL POSTERIOR RESTORATIONS

- > Onlay - overlays
- > Table tops
- > Full veneers
- > Buccal-occlusal veneers (BOV)

CERAMIC ABUTMENTS ON IMPLANTS

- > Reliability
- > When should we use titanium abutments?

MIPP 3 and 4 - MINIMALLY INVASIVE PROSTHETIC PROCEDURE

- > Step-by-step presentation of complex cases with rehabilitation of two arches
- > Clinical cases with decades-long follow-up

HANDS-ON TRAINING BY THE COURSE PARTICIPANTS

The participants' practice will focus on tooth preparation for veneers, full-veneers and buccal-occlusal veneers on dental models



THEORETICAL SESSION



PRACTICAL SESSION



LIVE DEMONSTRATION

